

ADDISON RESERVE PLAT ONE

PART OF THE GLENEAGLES/POLO CLUB WEST P. U. D.
SITUATE IN SECTIONS 27 AND 28, TOWNSHIP 46 SOUTH, RANGE 42 EAST
PALM BEACH COUNTY, FLORIDA
FEBRUARY, 1995

SHEET 4 OF 7

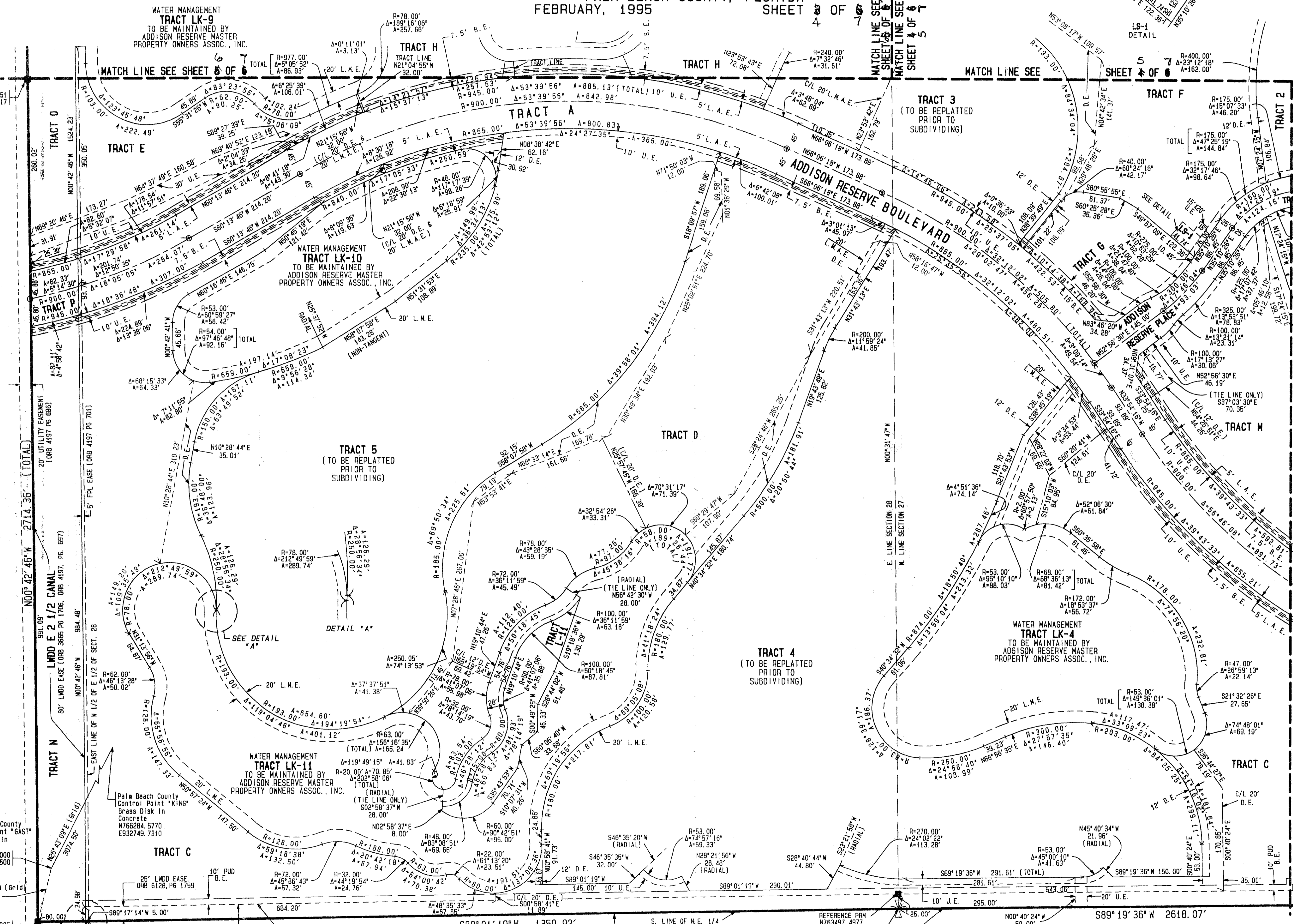
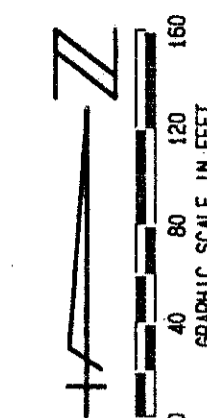
146

STATE OF FLORIDA
COUNTY OF PALM BEACH

THIS PLAT WAS FILED FOR
RECORD
THIS DAY OF
AD, 1995 AND DULY RECORDED
IN PLAT BOOK _____ ON PAGES
_____ AND _____

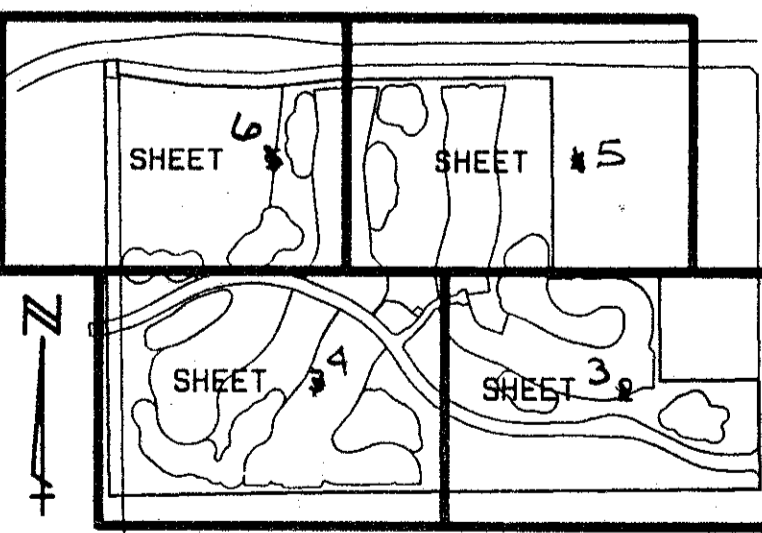
DOROTHY H. WILKEN, CLERK
BY: _____ D. C.

CIRCUIT COURT SEAL



- LEGEND:**
- L. M. D. LAKE WORTH DRAINAGE DISTRICT
 - FLR FLORIDA POWER & LIGHT
 - ORB OFFICIAL RECORD BOOK
 - PBCB PALM BEACH COUNTY
 - PRM PERMANENT REFERENCE MONUMENT
 - P. B. PLAT BOOK
 - P. PAGES
 - PG PAGE
 - U.E. UTILITY EASEMENT
 - D.E. DRAINAGE EASEMENT
 - A.E. ACCESS EASEMENT AND MAINTENANCE EASEMENT
 - TOWNSHIP
 - RANGE
 - (NR) NON RADIAL
 - C/L CENTERLINE
 - PERMANENT CONTROL POINT
 - PERMANENT REFERENCE MONUMENT
 - SET PLM 4763
 - PERMANENT REFERENCE MONUMENT FOUND
 - L. M. A. E. LAKE MAINTENANCE ACCESS EASEMENT
 - L. M. E. LAKE MAINTENANCE EASEMENT
 - R/W RIGHT OF WAY
 - EASE EASEMENT
 - PLANNED UNIT DEVELOPMENT
 - B. E. BUFFER EASEMENT
 - L. A. E. LIMITED ACCESS EASEMENT

COORDINATE NOTE:
ALL DISTANCES ARE GROUND
SCALE FACTOR = 1.0000242
N89°19'27"E (Plat) 00°00'07" Bearing
N89°19'34"E (Grid) 00°00'07" Bearing
Clockwise Rotation
(Plat to Grid)
North line of the NW 1/4
Section 27-46-42
Basis of Bearing
COORDINATES SHOWN ARE GRID
DATUM = NAD 83 1990 ADJUSTMENT
ZONE = FLORIDA EAST
LINEAR UNIT = US SURVEY FEET
COORDINATE SYSTEM 1983 STATE PLANE
TRAVERSE MERCATOR PROJECTION
GROUND DISTANCE X SCALE FACTOR = GRID



SHEET LOCATION MAP
NOT TO SCALE

SUBDIVISION * Addison Reserve Plat One
BOOK 75 PAGE 146
FLOOD MAP * FLOOD ZONING RTs
QUAD # 52.37 ZIP CODE 33446
SE 80-215
PUD NAME Gleneagles/Polo Club West P.U.D.

Rev. 6-22-95
Rev. 5-24-95
Rev. 5-22-95
Rev. 5-13-95
Rev. 5-7-95
CADD FILE TWKCRP07

75/146 4 7

0230-013

MOCK, ROOS & ASSOCIATES, INC.
5720 CORPORATE WAY, WEST PALM BEACH, FL 33407 (407) 683-3113
SCALE: 1"=80' DATE: FEBRUARY 1995
P. A. NO. 94182.00 DWG. NO. 46-42-27-33
ADDISON RESERVE PLAT ONE
PART OF "GLENEAGLES/POLO CLUB WEST, P. U. D."
SECTIONS 27 & 28, TOWNSHIP 46 SOUTH,
RANGE 42 EAST

Pet. 80-215H
5/3/3/K

GLENEAGLES/POLO CLUB WEST P.U.D.

T&Z-477

TW 1-1 6 08:38:07 1995